

# USVI Resilient Recovery Workshop RECAP

ST. CROIX, USVI | MARCH 12, 2018



## AGENDA

Time	Activity	
9:30 - 9:45	Coffee	
9:45 - 10:00	Welcome and Opening Remarks: Overview of Workshop	PLENARY <i>Alanna Olken, Chief of Staff, Governor's Task Force</i> <i>Harriet Tregoning, Governor's Task Force</i>
10:00 - 10:30	Presentation: <i>Future Climate Risks to USVI</i>	<i>Greg Guannel, UVI</i>
10:30 - 10:45	Presentation: <i>Resilient Recovery &amp; Best Practices</i>	<i>Jonathan Halfon, FEMA</i>
10:45 - 11:00	<i>Defining Resilience Values</i> Explanation of the day's exercises and how they will help to define the US Virgin Island's Resilience Values	<i>Harriet Tregoning, Governor's Task Force</i>
11:00 - 12:00	Exercise 1: <i>US VI's Risks and Vulnerabilities</i> Teams introduce themselves and their background in sectors and/or resilience. Breakout groups work through two worksheets that assess the territory's context as it relates to risks and vulnerabilities.	BREAKOUTS
12:00 - 12:45	Lunch and Draft Vision Statements	
12:45 - 1:30	Exercise 2: <i>Brainstorming Resilience Values</i> Teams revisit Exercise 1 Worksheet 2 and relate risks and vulnerabilities to Resilience Values.	BREAKOUTS
1:30 - 2:00	Report Out: Groups report on Exercise 1 and 2, focusing on Resilience Values their discussions highlighted. Feedback will help teams refine values.	PLENARY
2:00 - 2:45	<i>Facilitated Resilience Values Identification</i>	
2:45 - 3:15	<i>Draft Resilience Vision/Opportunity Statement</i>	
3:15 - 3:30	Closing Remarks and Next Steps	<i>Harriet Tregoning</i>
3:30	Adjourn	



# Future Climate Risks to USVI

---

*GREG GUANNEL, RESILIENCY AND SUSTAINABILITY CHAIR  
UNIVERSITY OF THE VIRGIN ISLANDS*



# Resilient Recovery and Best Practices

---

**JONATHAN HALFON**  
*FEDERAL EMERGENCY MANAGEMENT AGENCY*



# US VI's Risks and Vulnerabilities

HARRIET TREGONING, MEMBER

*GOVERNOR'S HURRICANE RECOVERY AND RESILIENCY  
ADVISORY GROUP*



## RISKS AND VULNERABILITIES

### Acute Shocks and Risks

- Hurricanes and High Winds
- Tsunamis
- Drought
- Earthquakes
- Heat Waves
- Storm Surge and Flooding
- Landslides
- Global Economic Disruption
- Vulnerability of Infrastructure to Extreme Weather
- Loss of Tourism, post-event
- Power Disruption
- Harbor Inaccessibility
- Food Insecurity
- Habitat Destruction
- Civil Unrest/Riot
- Wildfires

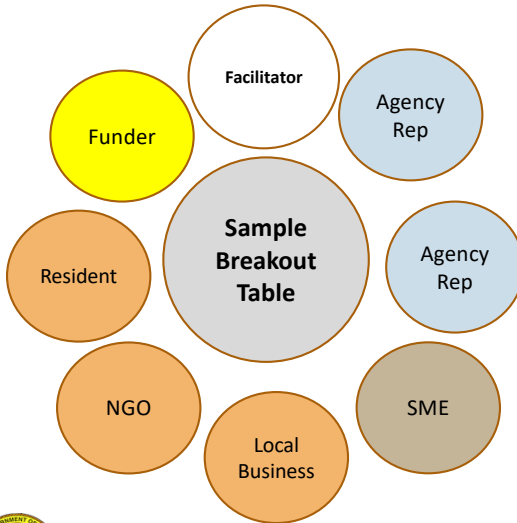
### Chronic Stresses and Vulnerabilities

Increasing ocean and air temperatures  
 Sea Level Rise  
 Lack of Transportation/Access  
 Inadequate Drinking Water Supply  
 Aging or Inadequate Infrastructure  
 Poverty  
 Unemployment  
 Over-dependency on a Few Industries/Employers  
 Lack of Education  
 Lack of Workforce Development  
 Declining Tax Base  
 Lack of Affordable Housing  
 Isolation/Inaccessibility  
 Fragmented Government  
 Lack of Economic Opportunity  
 High Cost of Living  
 Beach Erosion  
 New Disease Incidence (e.g., Zika, West Nile)  
 High Energy Costs  
 Habitat Loss (e.g., coral reefs)  
 Health Care Access  
 Farm/Garden impacts of drought and high temperature  
 Lack of Community Cohesion



## Breakout Group Setup and Teaming

Workshop participants are strategically assigned to breakout tables based on their organizational involvement and specific expertise.



### Breakout Table Roles:

#### Facilitator

Guides discussion and leads exercises with the breakout groups.

#### Project Team:

##### Local Official/Agency Rep

Provide(s) knowledge of USVI's current priorities and initiatives and of opportunities for cross-departmental collaboration.

##### Community and Private Sector Partner(s)

Provide(s) on-the-ground knowledge of risks and vulnerabilities facing local communities, businesses and systems.

##### Funder

Partner Provide(s) funding, legislation, and regulation expertise on potential projects.

### External Experts:

#### Subject Matter Experts (SMEs)

Provide(s) technical, local, and/or funding expertise around potential partnerships and design and implementation strategies.

#### Climate or Resilience Expert

Provide(s) specific recovery or resilience expertise in project conception, design, and implementation. These participants often float between tables.



## 1. Introductions

### Purpose

This session will allow participants to meet everyone at their breakout table, and discuss their experience with the Territory's agencies, hurricanes and/or resilience.

### Instructions

**10 minutes**

#### Introductions

- Name
- Organization
- What does resilience mean to you?
- Why are you attending today's workshop?



## 2. US Virgin Islands' Risks and Vulnerabilities: Part 1

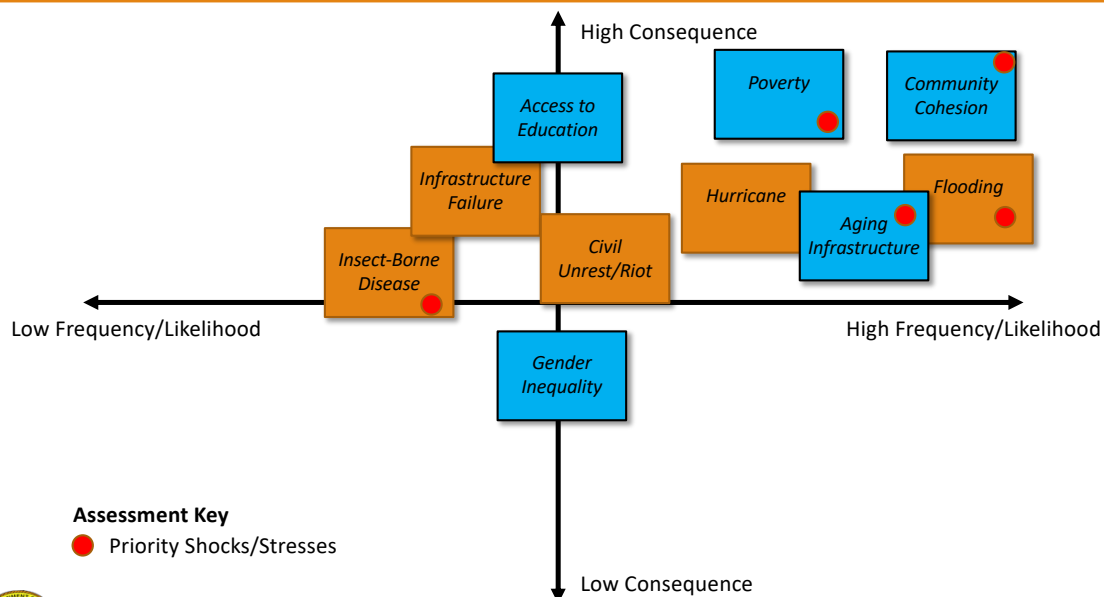
### Purpose

**50 minutes**

Understanding the risks of a location includes identifying potential and existing shocks and stresses in the place, their severity, and the interdependencies between them. This exercise aims to reveal and prioritize risks for the team to consider, and to consider how these risks present challenges to infrastructure development.



### Part 1: Assessing Shocks and Stresses



## 2. US Virgin Islands' Risks and Vulnerabilities: Part 2

### **Purpose**

This exercise helps to assess US Virgin Islands' resilience against drivers within the following pillars: Health and Wellbeing, Economy and Society, Infrastructure and Environment, and Leadership and Strategy; and will generate a comprehensive profile of US Virgin Islands' risk and resilience.

### **Instructions**

**45 minutes**

- [Instructions here] "Using the following tables..."
- Identifying **Strengths** and **Weaknesses**
- Brainstorming Resilience Values



GLOBAL  
RESILIENCE  
ACADEMY  
THE UNIVERSITY OF THE VIRGIN ISLANDS

### Exercise 1.2

#### Brainstorming Resilience Values

INFRASTRUCTURE & ENVIRONMENT	Provides reliable communication and mobility	
	Ensures continuity of critical services	
	Provides and enhances natural and manmade assets	
ECONOMY & SOCIETY	Fosters economic prosperity	
	Ensures social stability, security, and justice	
	Promotes cohesive and engaged communities	



GLOBAL  
RESILIENCE  
ACADEMY  
THE UNIVERSITY OF THE VIRGIN ISLANDS

## Exercise 1.2

## Brainstorming Resilience Values

HEALTH & WELL-BEING	Meets basic needs	
	Supports livelihoods and employment	
	Ensures public health services	
LEADERSHIP & STRATEGY	Promotes leadership and effective management	
	Empowers a broad range of stakeholders	
	Fosters long-term and integrated planning	



GLOBAL  
RESILIENCE  
ACADEMY  
THE RESILIENT LIFE FOR EVERYONE

### 3. Team Report-Out and Discussions

#### **Purpose**

This session allows teams to share their resilience values, and receive feedback from their peers in order to refine their resilience values.

#### **Guiding Questions for Presentations**

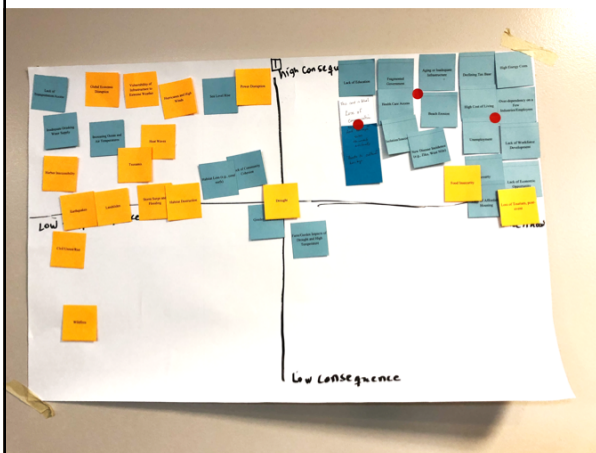
**30 minutes**

- What are the priority Shocks and Stresses (Try to combine to get no more than 3)
- What are your top 3 strengths?
- What are the top 3 weaknesses?
- Did you have any “ah-hah” moments?



GLOBAL  
RESILIENCE  
ACADEMY  
THE RESILIENT LIFE FOR EVERYONE

## RISKS AND VULNERABILITIES EXERCISE: EXAMPLES



## ASSESSING STRENGTHS AND WEAKNESS: EXAMPLES

	Weakness	Strength
<b>INFRASTRUCTURE &amp; ENVIRONMENT</b>	1) Yes	1) Wireless Network 2) Small Community 3) Radio/ Newspaper
Provides reliable communication and mobility		
Ensures continuity of critical services	1) Tenuous / Gov't 2) Transparency	1) Non-profits / FB Orgs (assisted leadership)
Provides and enhances natural and manmade assets	1) Poor Environmental Management	1) Non-Profits / Volunteers 2) Creative Ingenuity 3) Strong Connection to Land
<b>ECONOMY &amp; SOCIETY</b>	1) Transient Community 2) Mount Flaming Out 3) Brain Drain	1) Ingenuity 2) Inclusiveness 3) Perseverance
Fosters economic prosperity		
Ensures social stability, security, and justice	1) Addressing Public Safety & Social Issues around Drugs & Drugs	1) Community of Elders 2) Togetherness at all times (A Village)
Promotes cohesive and engaged communities		

VILLAGE

	Weakness	Strength
<b>HEALTH &amp; WELL-BEING</b>	1) Needs of Mental Health/Disabled Individuals 2) Outdated Systems & Policies 3) Lack of funding/commitment	1) Active/Engaged Non-profits / Faith-Based Orgs 2) Personal / Individual Resilience
Meets basic needs		
Supports livelihoods and employment	1) Reliance on Gov't for Jobs 2) Lack of Education/Job Training Options	1) Creative w/ limited ressource opportunities 2) Enterprise potential
Ensures public health services	1) Lack of Effective Medical Leadership 2) Lack of reliable data/metrics	1) Active/Engaged NPO/FBO 2) Strong Social Networks (Village Mentality)
<b>LEADERSHIP &amp; STRATEGY</b>	1) Lack of Capacity 2) Strained Financial Resources	1) Local/Strong Civic Leaders 2) Passionate Voices
Promotes leadership and effective management		
Empowers a broad range of stakeholders	1) Lack of Communication/Connection to People/Single Gov't	
Fosters long-term and integrated planning	1) Lack of Comprehensive Planning 2) Coordination / Data Base	1) Many Plans





## WHAT DOES A **VISION STATEMENT** LOOK LIKE?

‘We are a Community of excellence that honors its heritage and is committed to the present, with a deliberate focus on the future—a unique community that concentrates on encouraging diversity, preserving the environment, and creating lasting value while maintaining friendliness, livability, and vibrancy.’ [From a Comprehensive Plan for a city in Texas]

“Develop a vibrant, resilient, sustainable and green community that protects and enhances the safety, health, environment, diversity, culture and economy of current and future residents and guests” [Community in NY, post-Sandy]



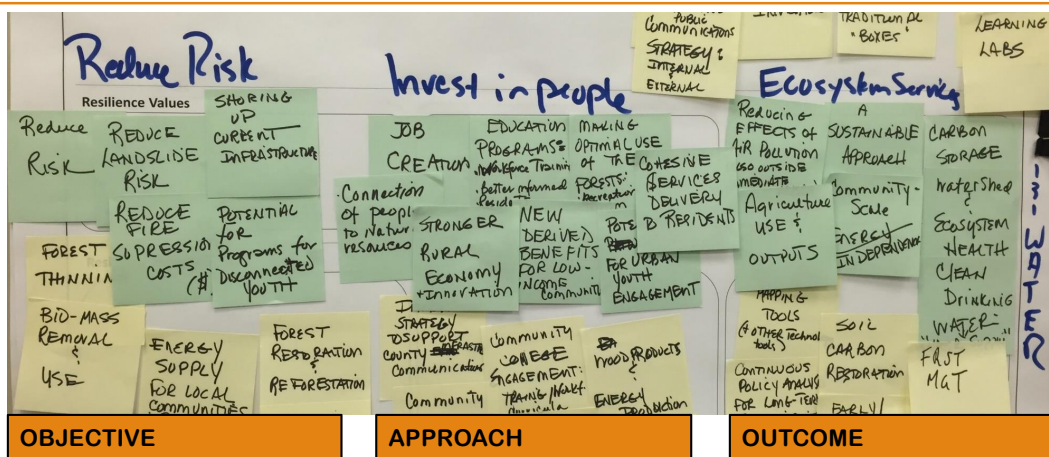
## LUNCH EXERCISE

- Over Lunch, participants jotted down their vision for a resilient St. Croix, or for the Territory of the US Virgin islands





## FACILITATED DISCUSSION: DEFINE RESILIENCE VALUE



*Establish a common set of resilience values and drivers as they relate to the project or program.*

*Facilitated brainstorm exercise to identify and group values and drivers.*

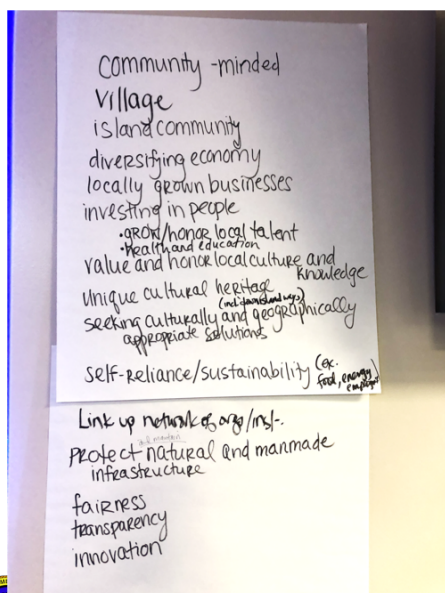
*An organized list of values and drivers, leading toward a resilience opportunity statement.*

# Resilience Values Identification & Draft Resilience Vision Statement

FACILITATED BY HARRIET TREGONING, MEMBER  
GOVERNOR'S HURRICANE RECOVERY AND RESILIENCY  
ADVISORY GROUP



## IDENTIFIED RESILIENCE VALUES



**Community-minded / village / island community**  
**Diversify economy**  
**Invest in people**

- Grow/honor local talent, local culture and knowledge
- Commit to their better health and education

**Preserve a unique cultural heritage**

**Self-reliance and sustainability**

- Foster and support locally grown businesses
- Seek culturally and geographically appropriate solutions

**Connect and leverage networks of organizations and institutions**

**Protect and maintain natural and man-made infrastructure**

**Fairness**

**Transparency**

**Innovation**



## *Proposed* RESILIENCE VISION STATEMENT

(based on workshop-identified resilience values)

---

**INVEST IN THE PEOPLE OF THE TERRITORY AND THEIR HEALTH, EDUCATION AND WELL-BEING NOW AND IN THE FUTURE. BUILD ON THE SPIRIT OF COOPERATION AND PARTNERSHIP IN THE AFTERMATH OF RECENT DISASTERS TO SUPPORT WITH FAIRNESS AND TRANSPARENCY:**

- **A DIVERSE AND ROBUST ECONOMY THAT IS SELF-RELIANT, SUSTAINABLE AND RESILIENT;**
- **A BUILT AND NATURAL ENVIRONMENT THAT IS ADAPTABLE AND WELL-MAINTAINED; AND**
- **A UNIQUE CULTURE, COMMUNITY SPIRIT AND QUALITY OF LIFE.**



## Closing Remarks and Next Steps

---

**HARRIET TREGONING, MEMBER**

*GOVERNOR'S HURRICANE RECOVERY AND RESILIENCY  
ADVISORY GROUP*



## How Projects can be shaped by Resilience Values

	RESILIENCE VALUE				Barriers to Success
	#1	#2	#3	#4	
Project Example #1:					
Project Example #2:					
Project Example #3:					



## Mapping Projects to Resilience Values: Sample Exercise

	RESILIENCE VALUE				Barriers to Success
	#1 INVEST IN PEOPLE	#2 SAFETY/ REDUCED RISK	#3 COMPETITIVE	# 4 RELIABLE	
Project Example #1: Restore Electric Power System	Lower energy bills New jobs for residents Train/retrain on new technology, technique Diversify economy with new industries (renewables) Make USVI Caribbean/ Global energy leader > Energy efficiency of homes Engage students on sustainability	Microgrids + Distributed generation: <ul style="list-style-type: none"> <li>○ redundancy</li> <li>○ lower rate of failure</li> <li>○ protect critical facilities</li> </ul> Composite poles, undergrounding Do risk mgt screen to prioritize	Get people to return Be first mover on tech innovation & renewables (solar) Lower energy costs- LPG & renewables Comparative advantage with solar tariff	Underground where feasible Sustain WAPA financially Microgrids for critical facilities Mix of fuel sources Use Muni Arborist to reduce tree impingement Tree trimmings as compost-save disposal \$	WAPA Solvency Remoteness, Topography, "Addressing" bad addresses Need to train Workforce on new technology Inertia to change Trees impinging on Power lines Costs not Competitive

